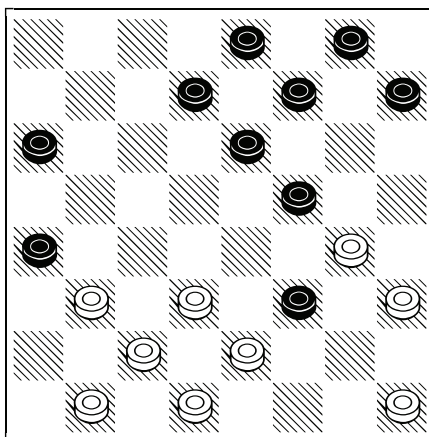


1. SARDU GIANNI - FERRO MARIO

74° Ass. Ital. - Santa Maria di Leuca - 10 -14

Nov 2010 - 1 turno, 2010

1.21-17 10-13 2.17x10 05x14 3.22-19 12-15
4.19x10 06x13 5.23-20 01-05 6.25-21 05-10
7.27-22 13-17 8.28-23 02-06 9.31-27 10-14
10.23-19 14x23



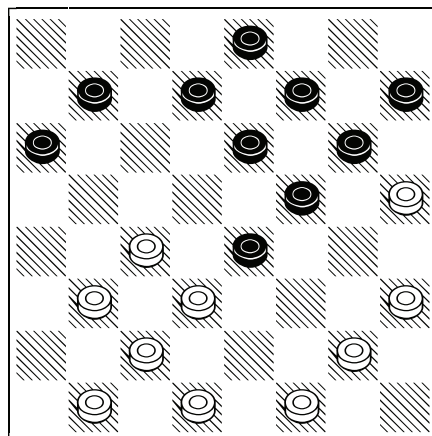
11.21-18 06-10 12.18-13 09x18 13.22x06
03x10 14.20-16 15-19 15.27x20 19-23 16.26-
22 11-14 17.29-26 10-13 18.22-19 14-18
19.19-14 18-21 20.14-10 23-27 21.30x23
21x30 22.10-06 30-27 23.06-03 08-12 24.03-
06 12-15 25.20x11 27x20 26.06-10 07x14
27.10x19 17-21 28.19-22 21-25 29.32-28 25-
29 30.22-27 29-25 31.27-22 25-21 32.22-19
21-18 33.28-23 20x27 34.16-12 27-30 0-2

2. GITTO FRANCESCO - DE VITTORIO ANTONIO

74° Ass. Ital. - Santa Maria di Leuca - 10 -14

Nov 2010 - 1 turno, 10.11.2010

1.21-17 10-13 2.17x10 05x14 3.24-20 01-05
4.20-16 05-10 5.25-21 12-15 6.22-18 02-05
7.28-24 14-19 8.23x14 10x19 9.32-28 08-12
10.27-22 04-08



11.31-27 05-10 12.21-17 10-14 13.29-25
14x21 14.25x18 06-10 15.18-13 09x18
16.22x06 03x10 17.27-22 11-14 18.30-27 15-
20 19.24x15 19-23 20.27x20 12x19 21.22x15
2-0

3. PERANI PIERLUIGI - SIGNORINI DIEGO

74° Ass. Ital. - Santa Maria di Leuca - 10 -14

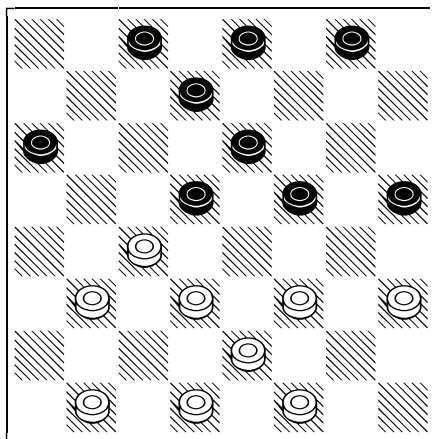
Nov 2010 - 1 turno, 10.11.2010

1.21-17 10-13 2.17x10 05x14 3.23-19 14x23
4.28x19 09-13 5.25-21 13-17 6.21-18 01-05
7.32-28 05-10 8.18-14 11x18 9.22x13 07-11
10.28-23 12-16 1-1

**4. FANTOZZI MARCELLO –
MANETTI FRANCO**

74° Ass. Ital. - Santa Maria di Leuca - 10 -14
Nov 2010 - 1 turno, 10.11.2010

1.21-17 10-13 2.17x10 05x14 3.23-19 14x23
4.28x19 01-05 5.25-21 05-10 6.32-28 11-15
7.28-23 07-11 8.21-18 12-16 9.19x12 08x15
10.26-21 10-14

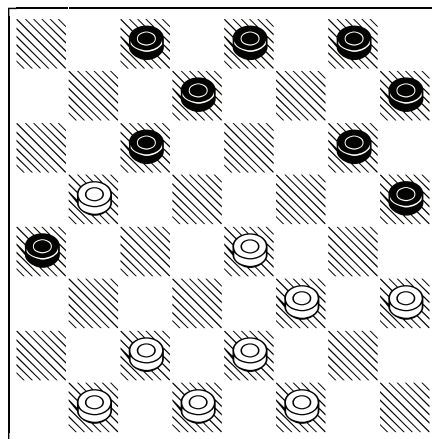


11.30-26 04-07 12.22-19 15x22 13.26x10
06x22 14.27x18 03-06 15.29-26 11-15 16.26-
22 06-10 17.23-19 07-12 18.21-17 02-05
19.31-27 16-20 20.18-13 09x18 21.22x06
15x31 22.24x08 2-0

**5. GRECO SEBASTIANO –
CORTESE GERARDO**

74° Ass. Ital. - Santa Maria di Leuca - 10 -14
Nov 2010 - 1 turno, 10.11.2010

1.21-17 10-13 2.17x10 05x14 3.23-19 14x23
4.28x19 09-13 5.32-28 12-16 6.25-21 13-17
7.21-18 01-05 8.18-14 11x18 9.22x13 05-10
10.28-23 07-12



11.23-20 16x23 12.27x20 04-07 13.20-15 07-
11 14.30-27 11x20 15.24x15 06-11 16.15x06
02x11 17.13x06 03x10 18.27-22 12-15
19.19x12 08x15 1-1